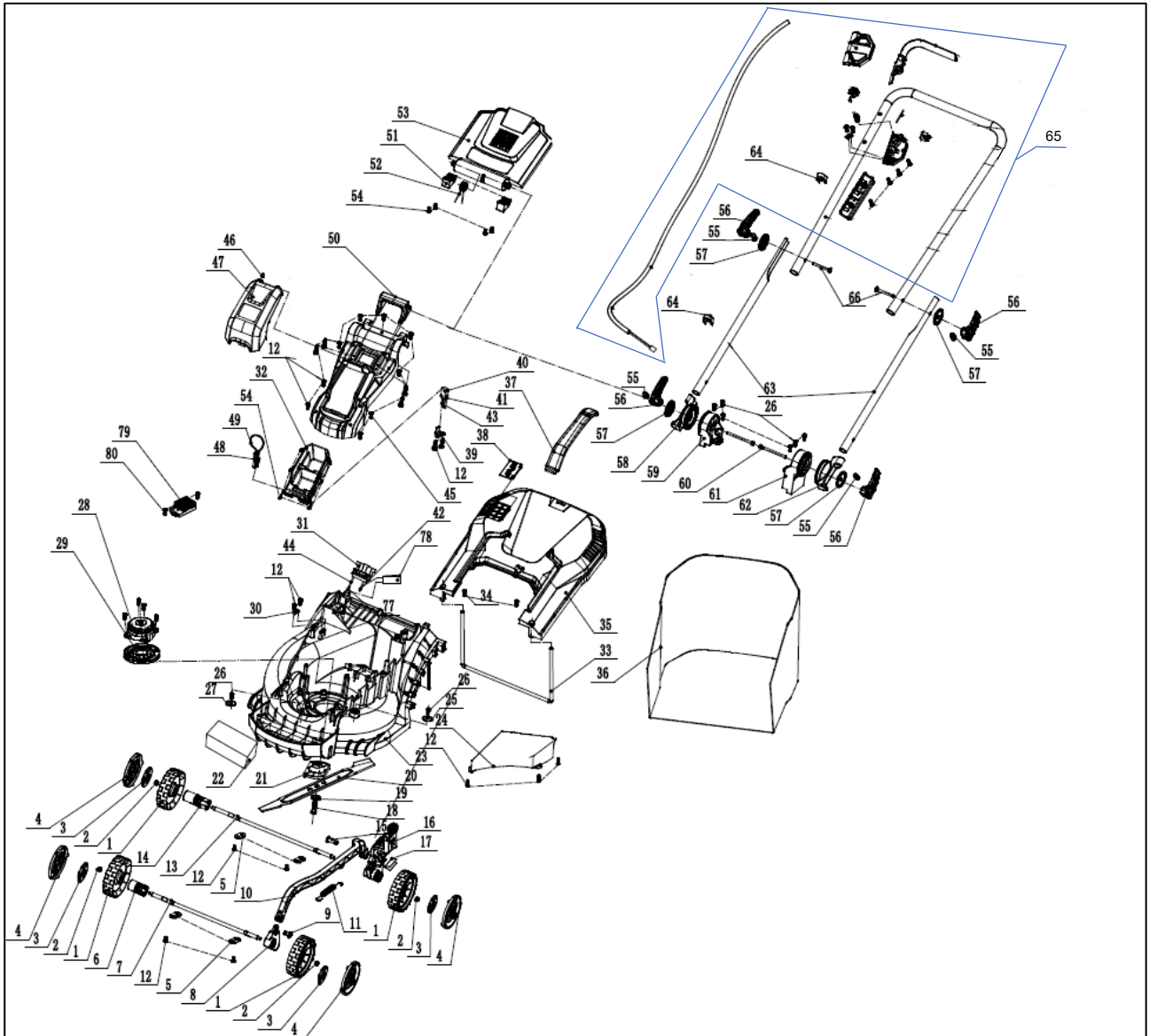


Model: LMX2033

Part number: 90063271

Year: 2022



POS	QTY	PARTNUMBER	BESKRIVELSE	DESCRIPTION
1	4	448704	HJUL 150MM	WHEEL
2	4	448705	LÅSEMØTRIK	LOCKNUT
3	4	448706	HJULKAPSEL	150 DECORATIVE WHEEL COVER
4	4	448707	HJULKAPSEL	150 WHEEL COVER
5	4	448708	PLADE	PRESS PLATE
6	1	448709	FRONTAKSEL HØJRE	RIGHT AXLE BRACKET 1
7	1	448711	FORHJULSLEJE	FRONT WHEEL BEARING
8	1	448713	AKSEL BESLAG VENSTRE	LEFT AXLE BRACKET 2
9	1	448714	FORBINDER	CONNECTING SHAFT
10	1	448715	JUSTERARM	ADJUSTING ROD
11	1	448716	FJEDER	BLANCING SPRING
12	30	448526	SKRUE	INNER PLUM PAN HEAD SELF - TAPPING SCREW
13	1	448717	BAGAKSEL	REAR AXLE SHAFT
14	1	448719	AKSEL BESLAG HØJRE	RIGHT AXLE BRACKET 2
15	1	448720	FORBINDER	CONNECTING SHAFT
16	1	448721	GEARKNOP	GEAR KNOB
17	1	448722	JUSTERINGSKLEMME	ADJUSTING CLIP
18	1	448723	KNIVBOLT	BLADE BOLT
19	1	448725	SKIVE	WASHER
20	1	448726	KNIV 33CM	BLADE
21	1	448728	KNIVHOLDER	BLADE HOLDER
22	1	448729	BALANCEAKSEL	BALANCING BAG
23	1	448730	KLIPPESKJOLD	PLASTIC CHASSIS
24	1	448731	COVER	CARRIER COVER
25	1	448732	SKIVE	FLAT WASHER
26	8	448733	SKRUE	SELF-TAPPING SCREW PAN HEAD TORX
27	1	448734	PAKNING	GASKET
28	1	448735	MOTOR	BRUSHLESS MOTOR
29	1	448736	HOLDER MOTOR	MOTOR HOLDER
30	1	448737	KABELKLEMME	CABLE CLAMP
31	1	448738	STIK	PLUG-IN HOLDER
32	1	448739	BATTERI HOLDER	BATTERY PACK SETTING
33	1	448740	GRÆSOPSAMLER 30L	30L GRASS COLLECTION BOX
34	2	448741	SKRUE	CROSS GROOVED DISC HEAD THREE COMBINATIO
35	1	448742	GRÆSOPSAMLER TOP	TOP COVER OF GRASS COLLECTION BOX
36	1	448743	GRÆSOPSAMLER POSE	30L CLOTH
37	1	448744	HÅNDTAG FOR GRÆSOPSAMLER	GRASS COLLECTION BOX HANDLE
38	1	448745	INDIKATOR FOR FYLDT GRÆSOPSAMLER	THE WIND DOOR PLANK
39	1	448746	PRINTPLADE	SWITCH BOARD
40	1	448748	MICRO SWITCH	MICRO SWITCH
41	2	448750	TERMINAL	FEMALE TERMINAL
42	1	448752	LEDNING	INTERNAL WIRE
43	1	448752	LEDNING	INTERNAL WIRE
44	1	448753	LEDNING	INTERNAL WIRE
45	1	448754	HUS	HOUSING

POS	QTY	PARTNUMBER	BESKRIVELSE	DESCRIPTION
46	1	448755	SKRUE	SELF-TAPPING SCREW PAN HEAD CROSS
47	1	448756	BATTERI COVER	TRANSPARENT COVER
48	1	448757	SIKKERHEDSNØGLE	SAFETY KEY
49		448758	INDSATS	SETON
50	1	448760	HÅNDTAG	HOUSING HANDLE
51	2	448761	BAGKONSOL	REAR COVER PRESSING PLATE
52	1	448762	FJEDER	REAR COVER TORSION SPRING
53	1	448763	BAGKLAP	REAR COVER
54	10	448492	SKRUE	SCREW
55	4	448765	MØTRIK	QUICK MOUNTING WRENCH NUT
56	4	448766	HÅNDTAG QUICK RELEASE	QUICK MOUNTING WRENCH
57	4	448767	PAKNING	QUICK MOUNTING SPANNER GASKET
58	1	448768	STYR BESLAG HØJRE	TURN BRACKET COVER RIGHT
59	1	448769	DREJEBESLAG HØJRE	RIGHT TURN BRACKET
60	2	448770	BOLT	HEXAGON BOLT
61	1	448771	DREJEBESLAG VENSTRE	LEFT ROTATING BRACKET
62	1	448772	STYR BESLAG VENSTRE	TURN BRACKET COVER LEFT
63	2	448773	UNDER STYR	LOWER HANDLEBAR
64	2	448775	KABELKLEMME	PLY-YARN DRILL
65	1	448776	ØVRE STYR KPL. MED STARHÅNDTAG/BOKS	TOP HANDLEBAR WITH SWITCHBOX/POWER CORD
66	2	448777	BOLT	SQUARE NECK BOLT
77	2	448778	TERMINAL	FEMALE TERMINAL
78	1	448779	HUNSTIK	2-HOLE FEMALE TERMINAL SLEEVE
79	1	448780	KONTROLPANEL	E2 CONTROLLER ASSEMBLY
80	2	448781	SKRUE	SELF-TAPPING SCREW PAN HEAD TORX